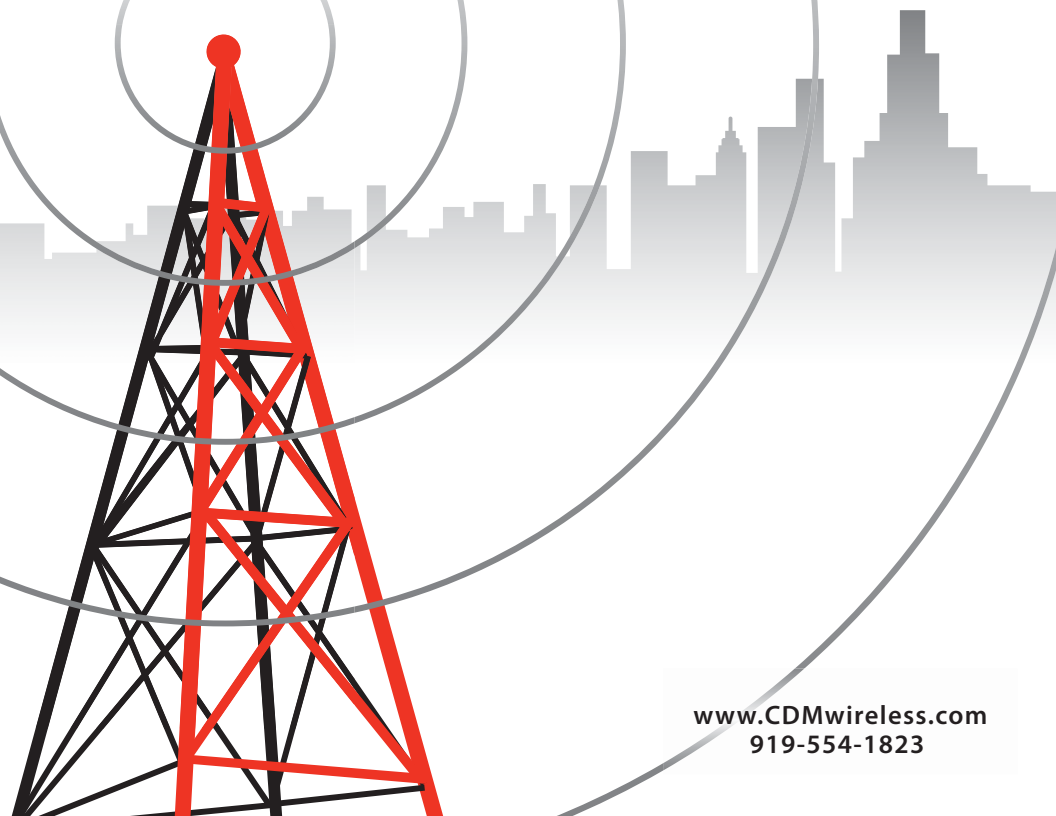




CDM
WIRELESS



www.CDMwireless.com
919-554-1823



...Innovative Wireless Solutions

150 Mbps

Viper i31r (2201AP)/(4201AP)

Triple Ethernet, PoE (PD) Receiver w/internal antenna

Viper i21s (2201T)

Dual Ethernet, PoE+ (PSE) Transmitter w/internal antenna
Provides PoE+ power to IP device on Ethernet 2

Viper i31s (4201T)

Triple Ethernet, PoE+ (PSE) Transmitter w/internal antenna
Provides PoE+ power to IP devices on Ethernet 2 & 3

Viper i32rp (5203RP)

Triple Ethernet, Dual Radio, PoE+ (PSE) Repeater w/internal antenna
Provides PoE+ power to IP devices on Ethernet 2 and 3

E-Bridge (2200LK)

Singleport PoE Ethernet Wireless Bridge w/internal antennas
Factory configured set of devices with all accessories included

V-Link (4200LK)

Multiport PoE/PoE+ (PSE/PD) Ethernet Link w/Internal antennas
Perfect for projects requiring cameras, VOIP, Access controllers, etc.

Viper e31r (5202AP)

Triple Ethernet, PoE (PD) Receiver
1 External antenna needed

Viper e32r (5203AP)

Triple Ethernet, Dual Radio, PoE (PD) Receiver
2 External antennas needed

Viper e21s

Dual Ethernet, PoE+ (PSE) Transmitter
External Antenna Needed. Provides power on Ethernet 2 for PoE+ device

Viper e31s (5202T)

Triple Ethernet, PoE+ (PSE) Transmitter
External antenna needed. Provides power on Ethernet 2 & 3 for PoE+ devices



Anthelion User Interface Software

The new CDM Wireless Anthelion user interface provides the client with a dashboard view of the wireless network performed on the dashboard while an advanced menu is available for more in depth settings, changes and diagnostics and scales allowing instant access to the network as a whole and individual units alike.

The Anthelion monitoring interface will map your local wireless network with dynamic performance data and

300 Mbps

Raptor i31r

Triple Ethernet, PoE Access Point w/internal antenna

Raptor e31r (7202AP)

Triple Ethernet, PoE Access Point, external antenna required

Raptor e32r (7203AP)

Triple Ethernet, Dual Radio, PoE Access Point, 2 external antennas required

Raptor i21s

Dual Ethernet PoE+ Transmitter w/internal antenna

Provides PoE+ power to IP device on Ethernet 2

Raptor e21s

Dual Ethernet PoE+ Transmitter, external antenna required

Provides PoE+ power to IP device on Ethernet 2

Raptor i31s

Triple Ethernet, PoE+ Transmitter w/internal antenna

Provides PoE+ power to IP devices on Ethernet 2 & 3

Raptor e31s (7202T)

Triple Ethernet, PoE+ Transmitter, external antenna required

Provides PoE+ power to IP devices on Ethernet 2 & 3

Raptor i32rp

Triple Ethernet, Dual Radio, PoE+ Repeater w/internal antenna,
1 external antenna required

Provides PoE+ power to IP devices on Ethernet 2 & 3



Key Features:

- PtP, PtMP or Mesh
- PoE 802.3af/at (PoE, PoE+)
- 900MHz / 2.4GHz / 4.9GHz / 5.8GHz
- 1-3 Ethernet ports
- 1-3 Radios
- Internal Antennas on certain models
- PoE injector & mounting kit included
- Maintains PtP & PtMP links up to 10 miles
- Factory programmed, configured, identified and link tested.
- Raptor used for High Bandwidth requirements
- Built in internal MIMO Antennas on some models

FULL PRODUCT SPECIFICATIONS AVAILABLE at www.CDMwireless.com

work as common, relevant data is presented in an intuitive format. Basic changes and diagnostics can be diagnostics reporting. Invaluable performance metrics will be on display in the form of easy to read gauges

live connectivity information that is overlaid on a Google™ map display via a local computer.



SUNSMART SOLAR ELECTRIC POWER SYSTEM

- AGM Batteries
- Solar Panel(s)
- Smart Technology Charging System
- Power Converter
- Control Wiring
- Side of Pole, Top of Pole or Ground Mount Available
- Weatherproof Enclosures

(Weight & Dimensions vary with specific application)

Features

The CDM Wireless SunSmart custom product line are self-contained Solar Packs for remote wireless surveillance applications. They are available in 12, 24, 36 or 48 Volts DC. Integrated AC converters are available for applications that include equipment that is powered by 24 to 120VAC.

With Each solar installation being slightly different due to specific power requirements, geographic location and battery backup, CDM's engineering staff custom designs solar packs for almost any application.

Manufactured for commercial applications using the best available materials on the market, the SunSmart product lines are engineered for quick deployment with 24/7/365 operation and virtually no maintenance. Systems ship factory assembled, wired, tested and include all hardware, batteries, controllers, enclosures etc. Poles are not included.

The CDM Wireless Solar Pack includes an "intelligent technology" power system that will disconnect the battery from equipment in the event the voltage drops below 11.6 volts. As the batteries recharge, the system brings the devices back online, significantly prolonging the life of the battery(s).

In addition to providing uninterrupted power, the SunSmart Series can be equipped with an optional Status and Alert module. This module provides real time measurements of the voltage output of the solar panel(s) and battery bank as well as temperature data. The status can be in the form of a simple web based application or provide additional data and logging. Alerts can be sent via email or monitored by software.

